

BROCK RESERVOIR & PUMPING STATION – SOIL ANCHORS

PROPERTY: THE REGIONAL MUNICIPALITY OF DURHAM
GENERAL CONTRACTOR: GRAHAM CONSTRUCTION LTD
SCOPE OF WORK: SOIL ANCHORS

INTRODUCTION

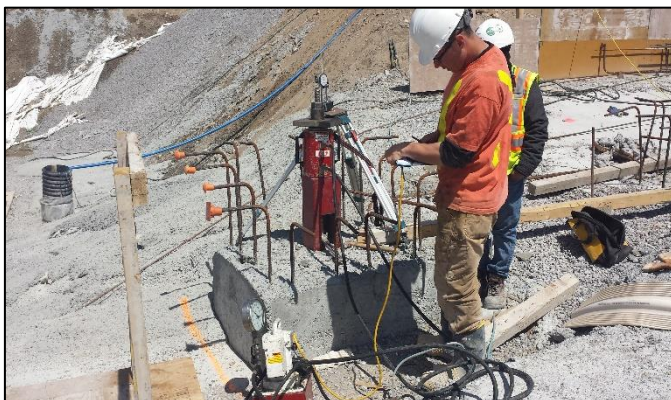
This Job Report is about the soil anchors execution on the New Brock water reservoir & Pumping station as a structural element against the uplift on the bottom of the reservoir.

SCOPE OF WORK

The scope of work of SITE Canada was to design / build structural and permanent soil anchors to avoid the uplift effect of the water level on the reservoir structure according the load and location of AECOM structural design.



Before the start of the production soil anchors and to confirm the design solution a campaign of verification test take place in three sacrificial soil anchors tested at 200% the Design Load.



After this successful test the production soil anchors started and 348 units has been installed between October and December 2015.

The soil anchors have 150 mm drilling diameter with a 32 mm DIWIDAG DCP bar as a steel reinforcement installed after the drill and grouting of the borehole.

All the soil anchors are proof tested at 133% the Design Lod and after locked at the Design Load.



QUANTITIES

3,200 m	Drilling with 150 mm diameter
348 units	DIWIDAG DCP Thread bar

